

ORDERING CODE - T6DDS SERIES

Model No. T6DDS - 038 - 028 - 1 R 00 - A 1 - 00 - ..

Series - SAE C 6 bolts
Mounting flange J744c

Displacement P1 and P2
Volumetric displacement (ml/rev.)
014 = 47,6
017 = 58,2
020 = 66,0
024 = 79,5
028 = 89,7
031 = 98,3
035 = 111,0
038 = 120,3
042 = 136,0
045 = 145,7
050 = 158,0

Type of shaft
1 = keyed (SAE C)
2 = keyed (SAE CC)
3 = splined (SAE C)
4 = splined (SAE BB)
5 = keyed (non SAE)

Modifications

Mounting w/connection variables
4 bolts SAE flange J518c

	P1 & P2 = 1"1/4 - S = 4"	
Type	UNC	Metric
Code	00	M0

Seal class

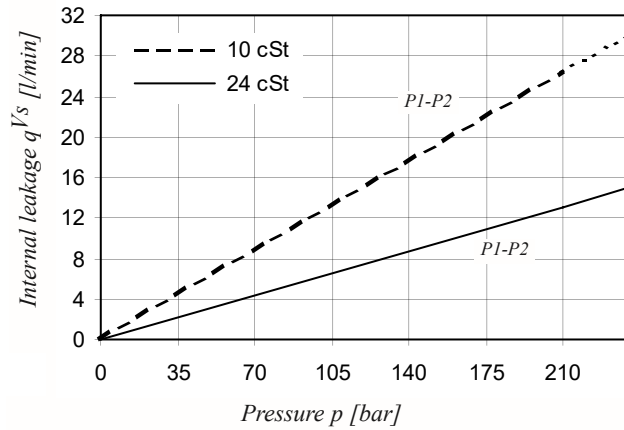
1 = S1 (for mineral oil)
4 = S4 (for the resistant fluid)
5 = S5 (for mineral oil and fire resistant fluids)

Design letter

Porting combination
00 = standard

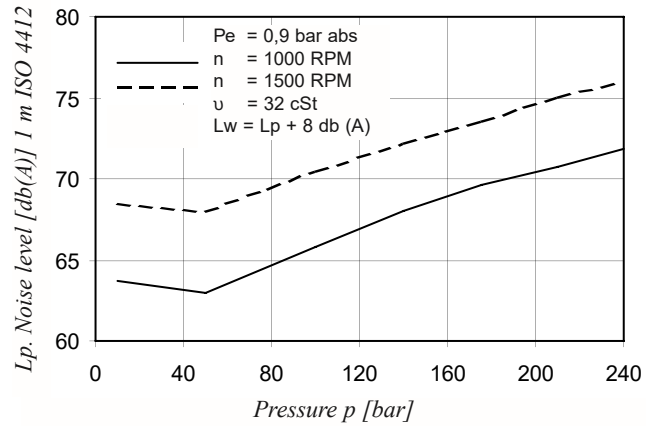
Direction of rotation (view on shaft end)
R = Clockwise
L = Counter-clockwise

INTERNAL LEAKAGE (TYPICAL)



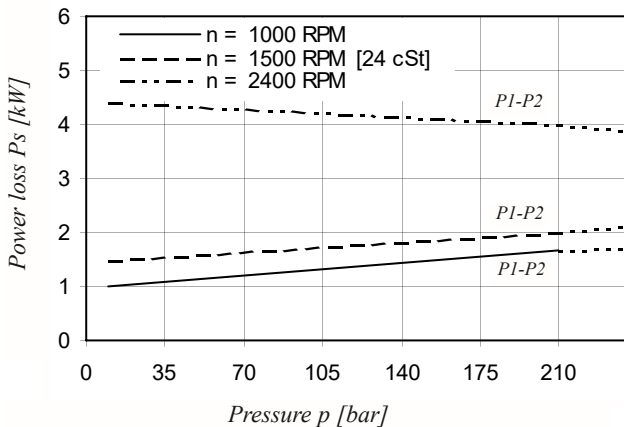
Do not operate pump more than 5 seconds at any speed or viscosity if internal leakage is higher than 50% of theoretical flow. Total leakage is the sum of each section loss at its operating conditions.

NOISE LEVEL (TYPICAL) T6DDS 038 - 038



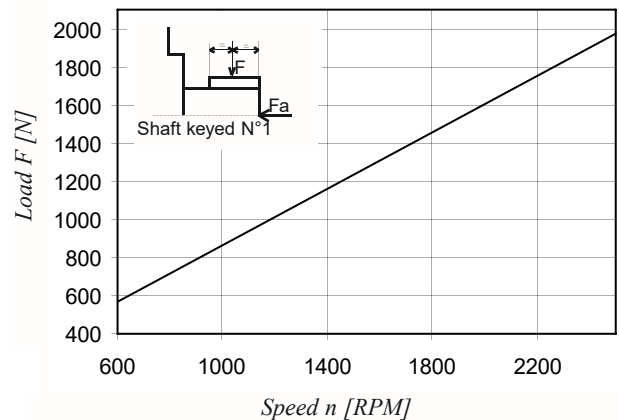
Double pump noise level is given with each section discharging at the pressure noted on the curve.

POWER LOSS HYDROMECHANICAL (TYPICAL)



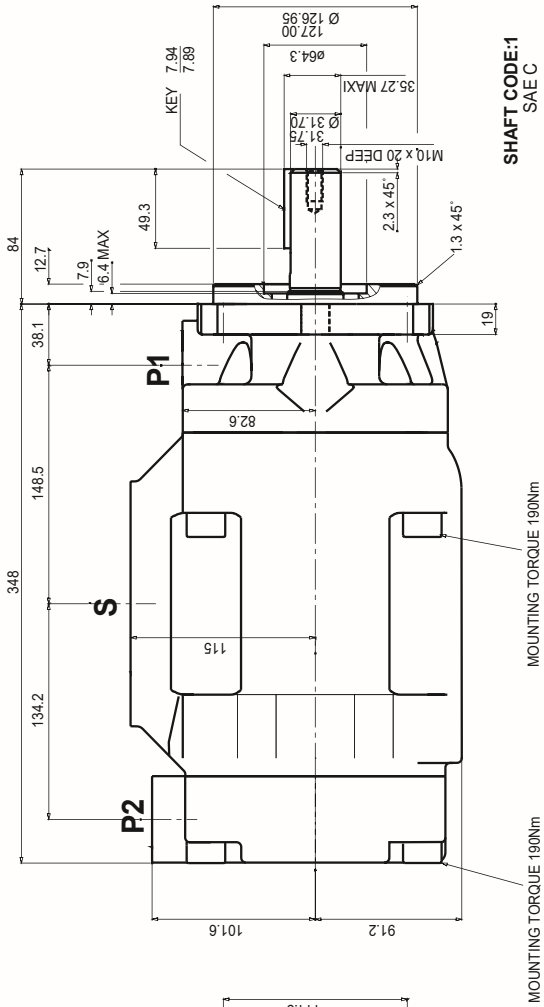
Total hydromechanical power loss is the sum of each section at its operating conditions.

PERMISSIBLE RADIAL LOAD



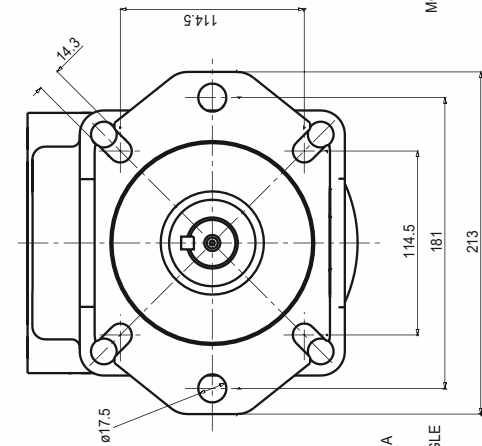
Maximum permissible axial load $F_a = 1200$ N

DIMENSIONS & OPERATING CHARACTERISTICS - Weight : 56 kg - T6DDS SERIES

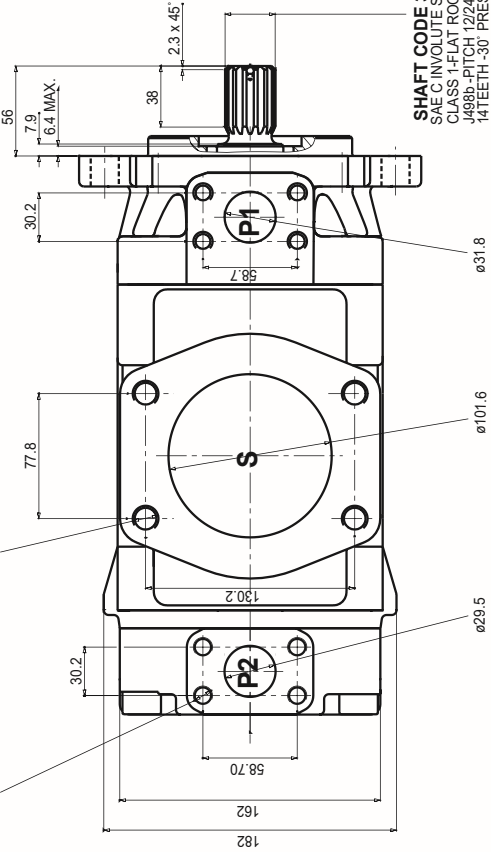


SHAFT CODE 1
SAE C

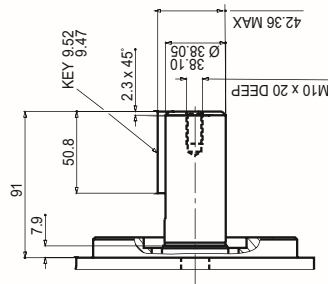
MOUNTING TORQUE 190Nm
MOUNTING TORQUE 190Nm
7/16 14UNC x 24 DEEP
M12 x 24 DEEP-METRIC VERSION
5/8 11UNC x 30 DEEP
M16 x 30 DEEP-METRIC VERSION



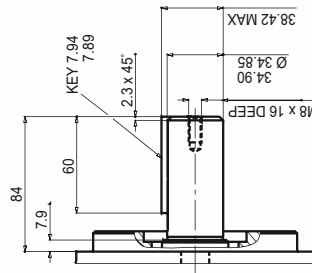
SHAFT CODE 4
SAE BB INVOLUTE SPLINE DATA
CLASS 1 - FLAT ROOT SIDE FIT
J498b - PITCH: 16/32
15 TEETH - 30° PRESSURE ANGLE



SHAFT CODE 3
SAE C INVOLUTE SPLINE DATA
CLASS 1-FLAT ROOT SIDE FIT
J498b - PITCH 12/24
14 TEETH - 30° PRESSURE ANGLE



SHAFT CODE 2
SAE CC



SHAFT CODE 5
(NO SAE)

Shaft torque limits [ml/rev x bar]	
Shaft	Vi x p max.
1	43240
3	61200
4	35880
5	55600